

December 18, 2009

Mr. Carven Blanck
Muza Sheet Metal Company, LLC
51 W. Fernau Avenue
Oshkosh, WI 54901

Dear Carven:

On Thursday, December 3, and Friday, December 11, 2009, Integrated Risk Management Associates, LLC did a field inspection at the Muza job-site in Appleton, Wisconsin. Our report and recommendations follow:

Appleton Medical Center, 1818 N. Meade Street, Appleton, WI 54911

December 3, 2009

I arrived at the center at 11:00 am. Troy Weise and Steve Otto were working on the upper mezzanine and had just returned from a swing-scaffold safety class. Both were working at knee level and were not using any ladders, scaffolding, or aerial lifts. All scaffolding had been set up by Boldt Construction. On this date the swing stage scaffolding was not being used, so it could not be observed. Depart area at 11:30 am. No discrepancies found.

December 11, 2009

I arrived at the center at 10:15 am. Signed in at the Boldt Construction trailer and spoke with Mike the General Manager. He had nothing but good things to say about the Muza employees. He told me that they were working on the upper mezzanine, but I could not find them.

None of the swing stage scaffolds were in use. Depart area at 10:45 am. No discrepancies found.



Figure1 Appleton Medical Center 12-03-09



Figure 2 Appleton Medical Center 12-03-09

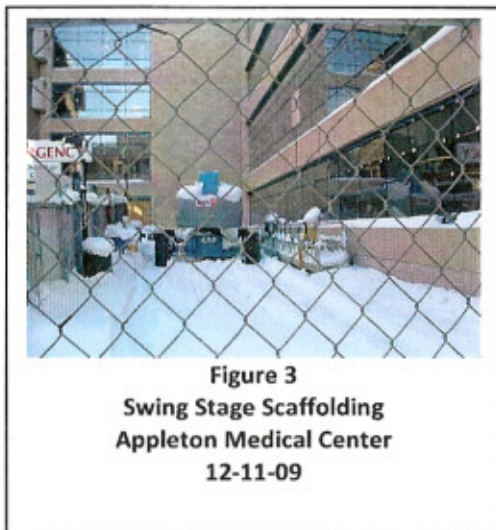


Figure 3
Swing Stage Scaffolding
Appleton Medical Center
12-11-09



Figure 4
Swing Stage Scaffolding
Appleton Medical Center
12-11-09

Sincerely,

Charles

Charles P. Howes
Senior Safety Engineer
Integrated Risk Management Associates, LLC

CH/kb